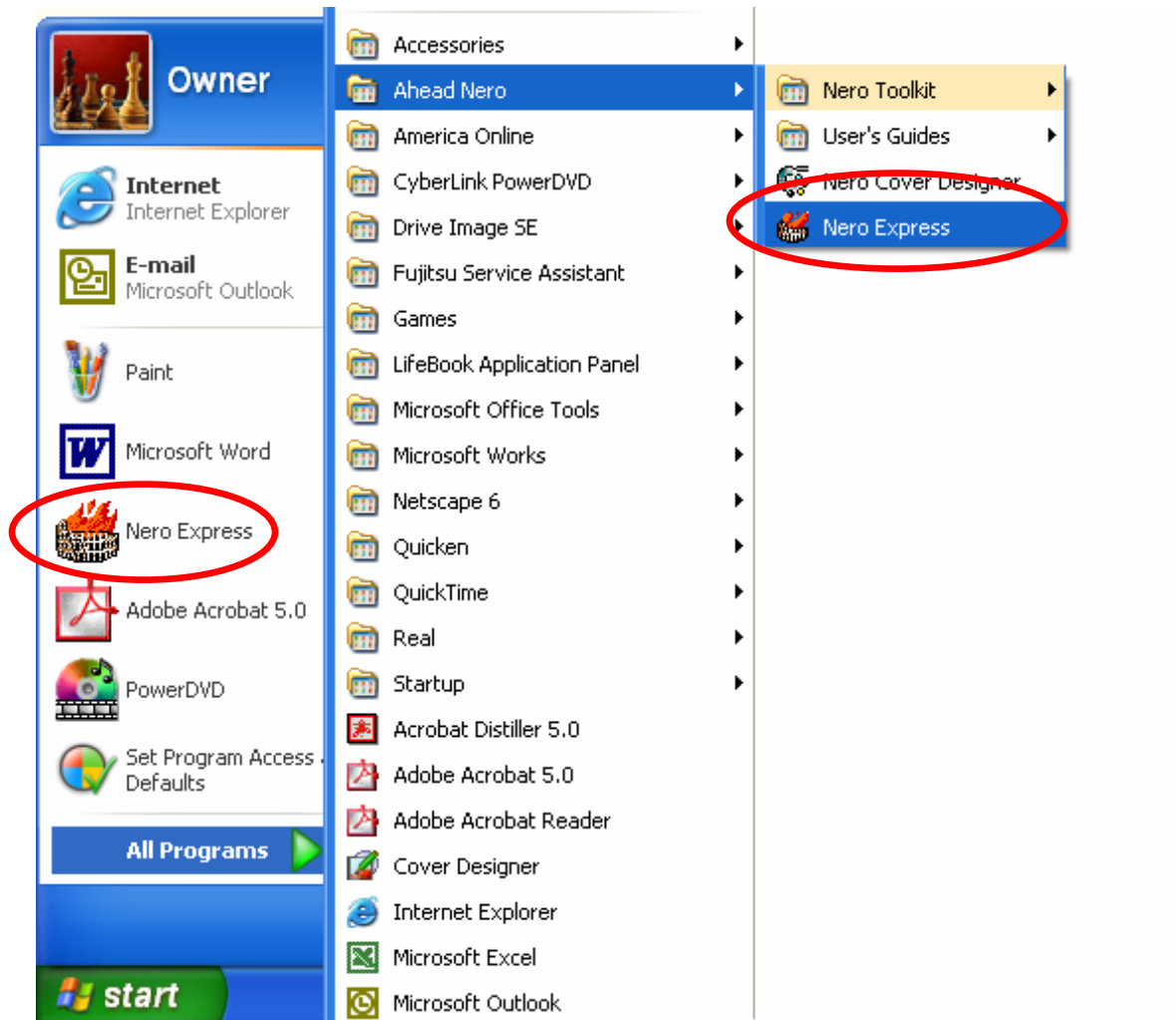
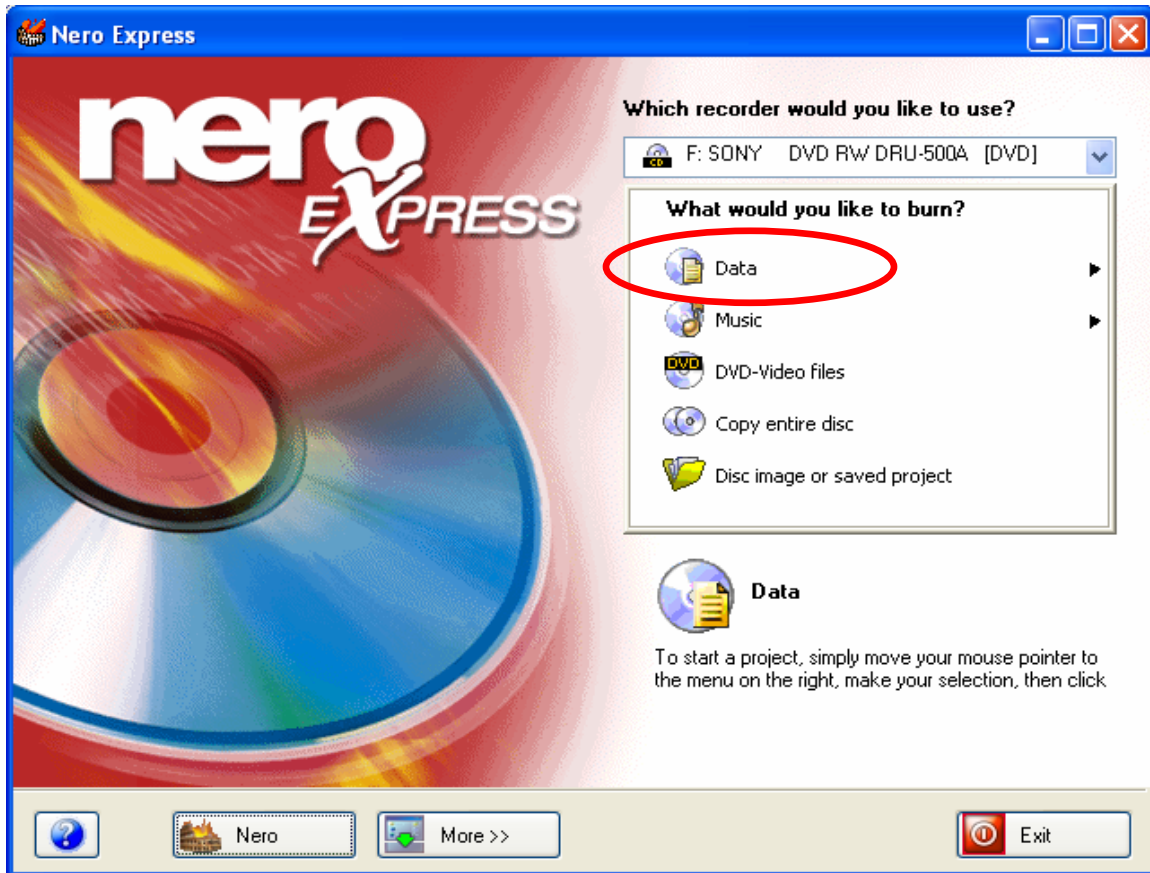


## How to Copy CD to CD

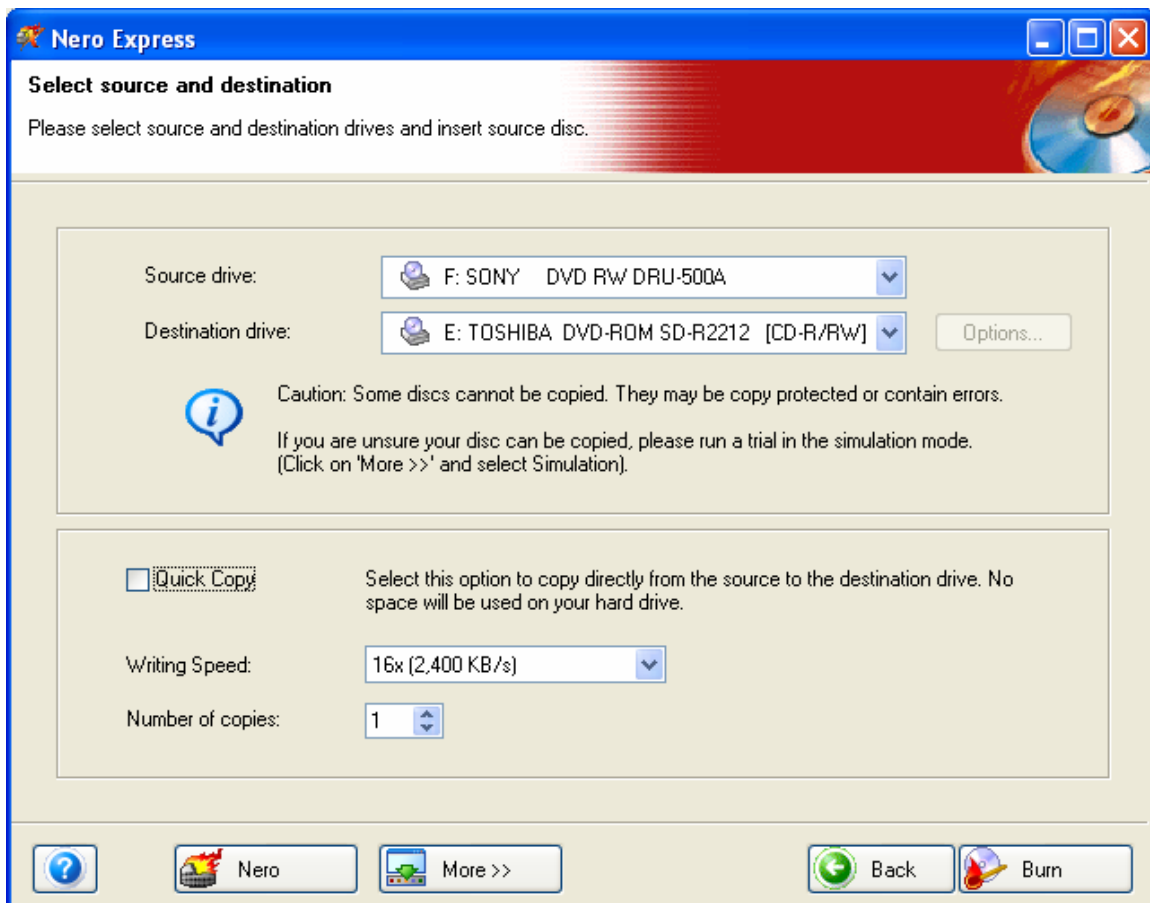
1. First to launch Nero Express: Go to **Start->All Programs->Ahead Nero->Nero Express**. Or you can just go to **Start->Nero Express**



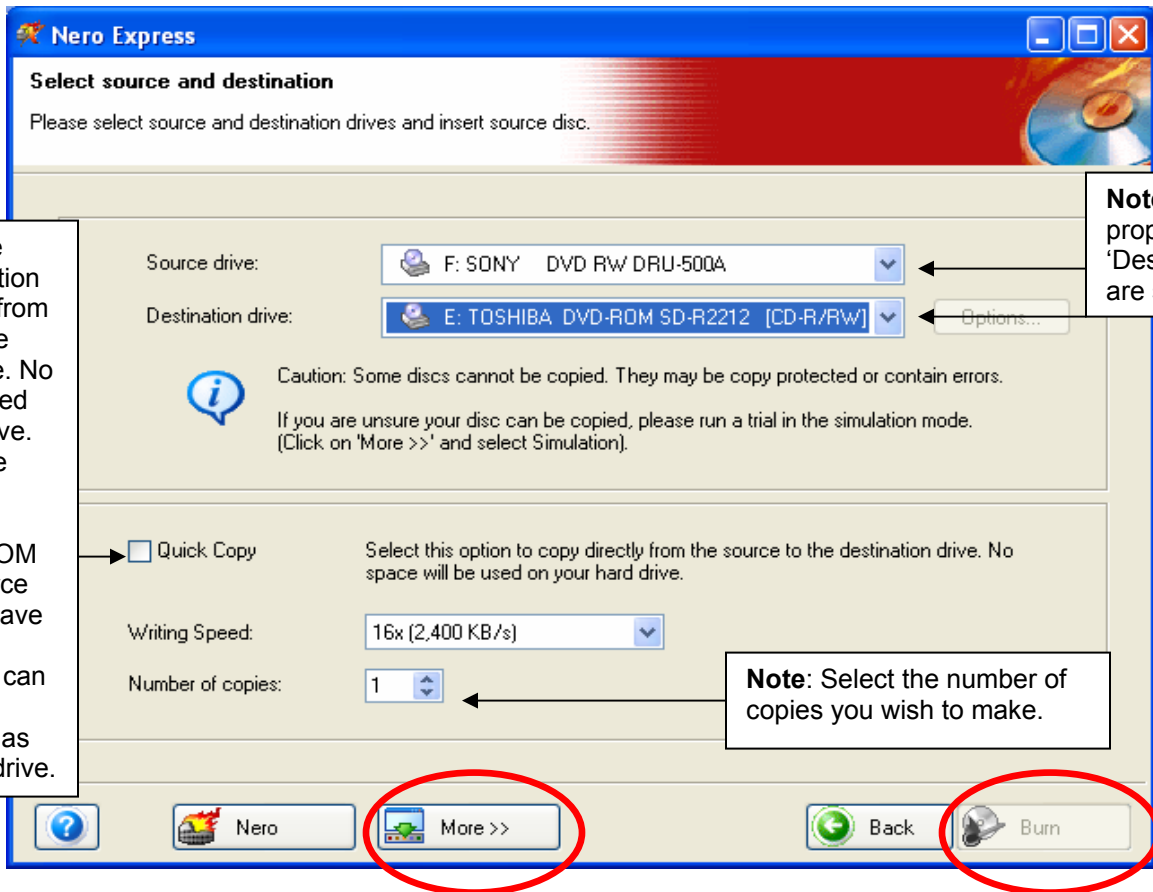
2. This will bring up the **Nero Express** main window. Select the 'Data' option.



3. This brings up the 'Nero Express' **Select source and destination** window.

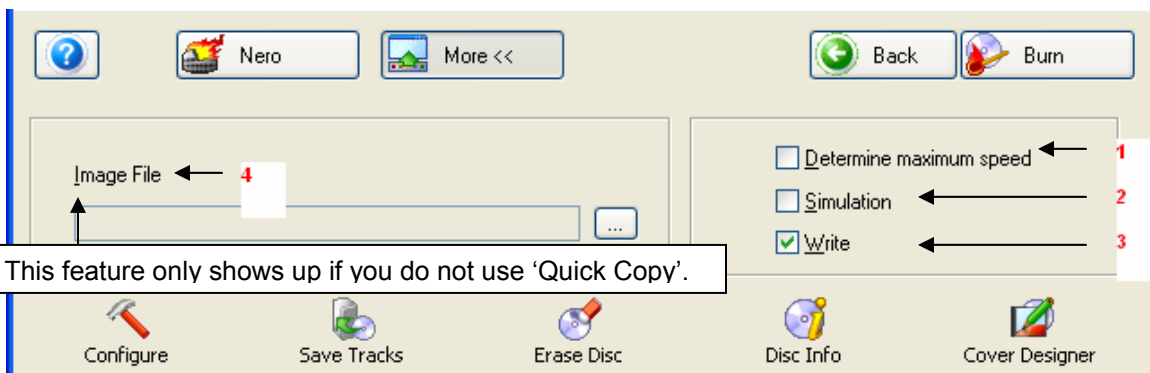


- Place the disc you wish to copy, Music CD, Data CD, Video CD, etc. in the **Source drive** and place a blank CD in the **Destination drive**.

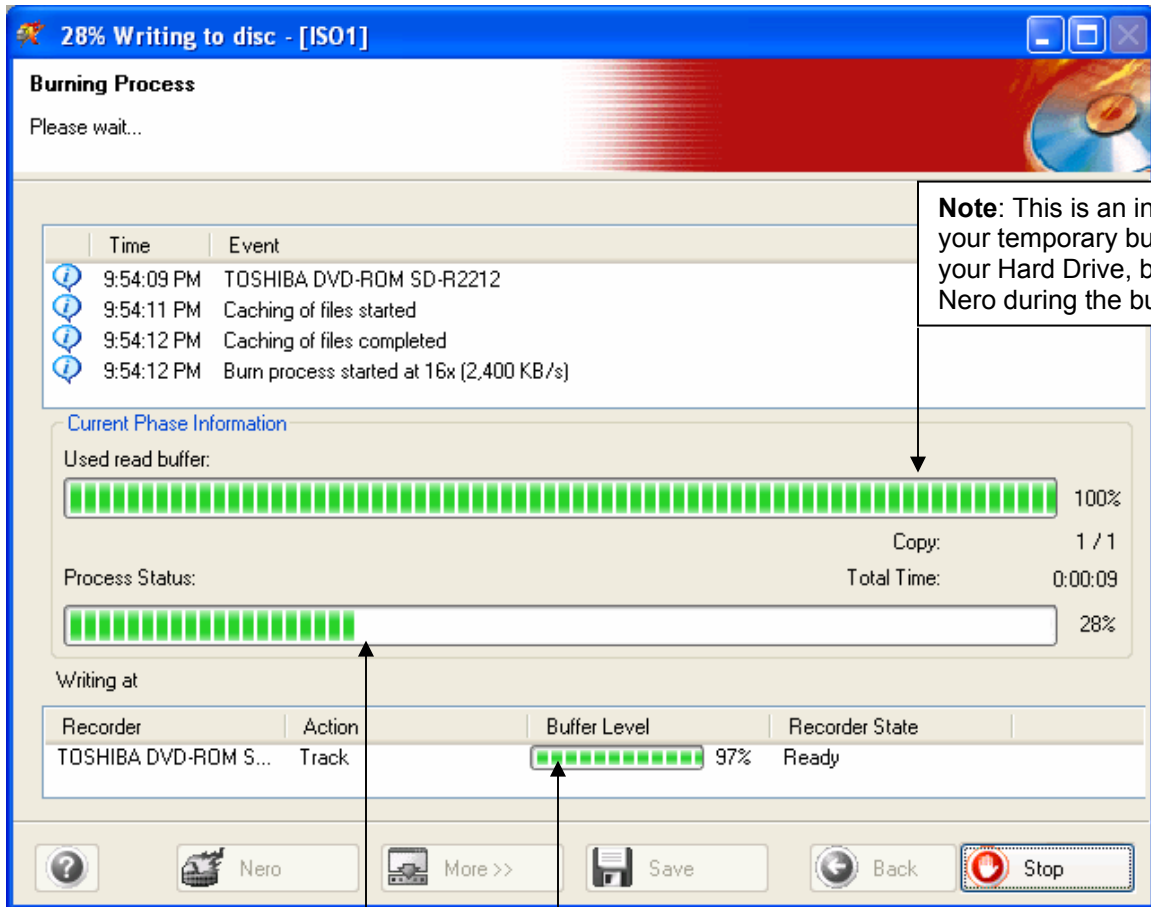


Click on '**More**', after you have placed your medium in the drives. Or click **Burn** to begin the Write operation to the CD.

- If you selected '**Burn**', you will go to the final step; If you selected the '**More**' option, you will get a drop down for more added control of the write method used.
  - Determine maximum speed – The speed test determines how quickly the compiled files can be accessed. If the access speed is slower than the burning speed, the burning speed is reduced so as to avoid a poor or failed write operation.
  - Simulation - The simulation runs all the steps involved in burning a medium apart from activating the laser beam, so that you can assume that if the simulation is successful, the burning process will also be successful. Use this to avoid wasting any CDR media on failed writes.
  - Write - This checkbox starts the actual physical burning process.
  - Image File – Use this option to select .ISO, .CUE, or .NRG image files and burn to CD.



6. Nero Express then begins the burn process.



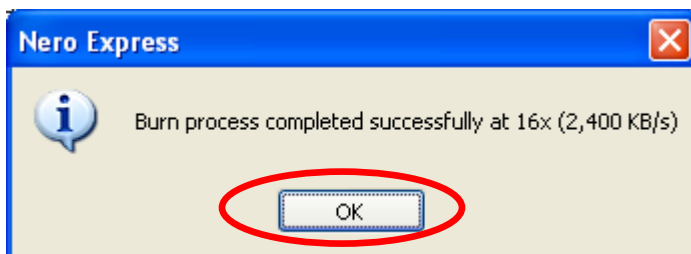
**Note:** This is an indicator of your temporary buffer level on your Hard Drive, being used by Nero during the burn.

**Note:** This is the progress bar of the actual write process

**Note:** This is an indicator of your buffer level on the Recorder.

7. When the write has been completed successfully, you will see the below window.

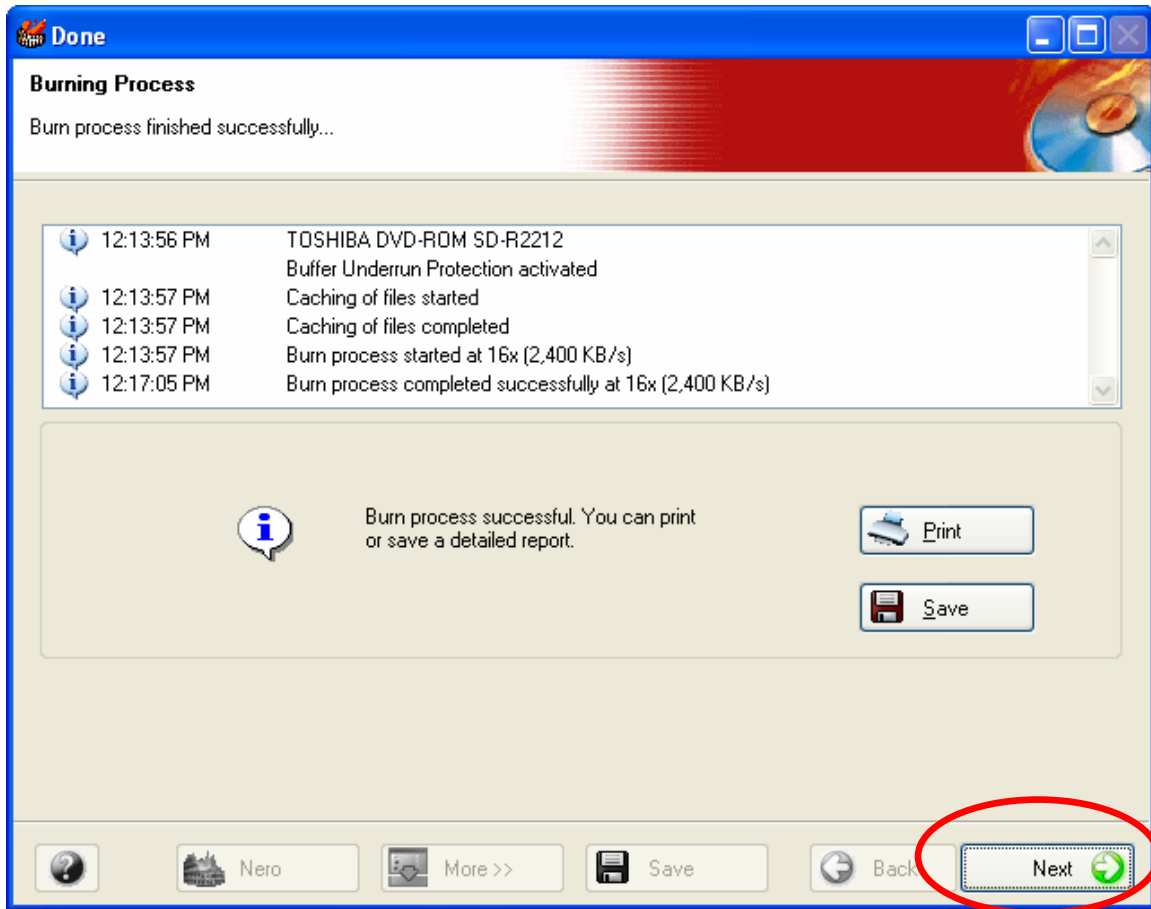
Click the **OK** button to continue.



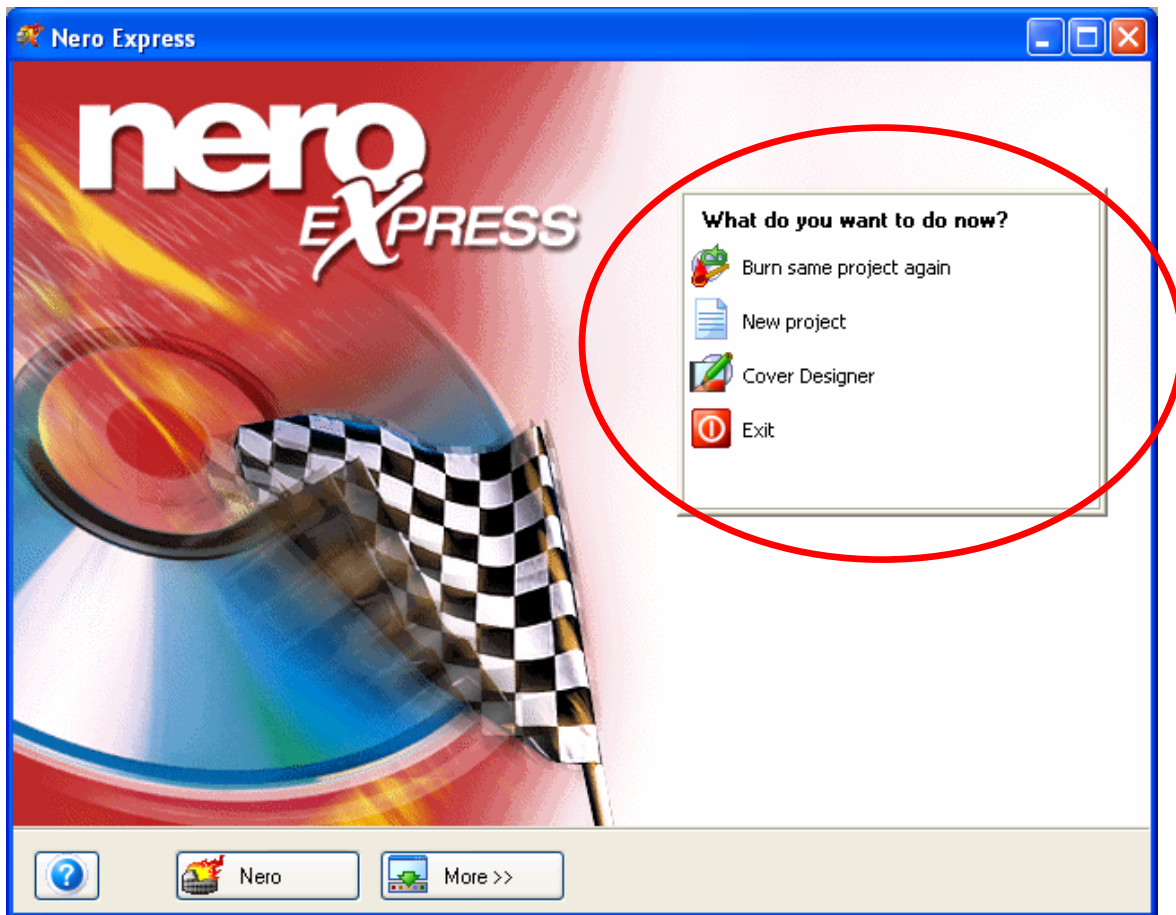
8. This brings up the **Burning Process** window. If you receive any error messages during the write and/or the write fails, be sure to Save the Nero log file to your desktop so that you can forward this to our Techsupport staff when asking for support. (Be sure to note where you save the file too, and what name you provide the file with to help you locate the file when needed.)

This file will have critical information about your system, as well as a very detailed description of the write process you are attempting. And it will provide exact error codes that will help our Techsupport team to troubleshoot your issue. Without this file, we may not be able to properly assist you to resolve your issues.

If the write process was a success, Click on 'Next' to continue.



9. And this brings us to the completion of the CD copy process. Here you can choose to **'Burn the same project again'**; start a **'New project'**; launch the **'Nero Cover Designer'** to create a label; or **'Exit'** the Nero Express program.



10. If you select the **'Exit'** option, you will get the window as seen below, asking if you wish to **'Save changes to ISO1?'**. Only select **'Yes'** if you plan on doing this exact same write operation in the future, as this will create an NRI image file that will allow you to do this same write operation without needing to select the format, the files, the write method, etc. It will do the exact same write operation without any input needed from you. In most cases, you will select **'No'** for this window.

